

# the SCOOP

Volume 1, Issue 3



March 2006



**BE SURE TO CHECK  
OUT THE NEW FEATURE ON  
THE LAST PAGE!**

**Inside this issue:**

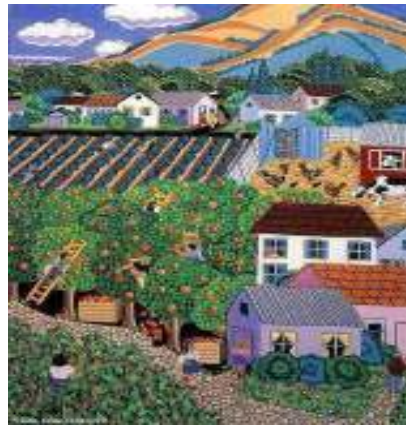
Meeting Minutes	2
Landscape Design	2
Events Calendar	3
Meeting Minutes	3
Photo of the Month	4

## The Role of the Master Gardener

By: A. P. Tuggle  
Extension Agent II — Rutherford County

**A**s we go into the new gardening season, this would be a good time to review the role of the Master Gardener and how we can become more involved with the program.

The role of a Master Gardener is to teach and promote environmental action and to allow the extension service to reach an ever increasing gardening audience. In order to meet an increasing audience, we must provide home horticulture education in a responsive and timely manner. We must collaborate with lo-



cal non-profit and municipal groups to offer leadership opportunities that will improve gardening practices in our communities.

We must foster a learning environment for volunteers that will promote environmental and gardening stewardship while representing The University of Tennessee and Tennessee State University. We also must encourage continued education, recruitment and training of new Master Gardener Volunteers by offering information through innovative programs.



### PROJECTS 2006 — Volunteers Needed

1. Garden Basics 2006
2. Brown Bag
3. Diagnostic Clinics
4. Senior Citizen Center
5. Demonstration Garden
6. Bellwood Elementary School Discovery Garden
7. Grape Vines at Lane Agri-Park
8. Orchard at Lane Agri-Park
9. Rain Garden at MTSU
10. Sam Davis Home in Smyrna

## Meeting Minutes — March 20, 2006

A. Blanton, Secretary

Master Gardeners of Rutherford County met on Monday, March 20, 2006, 6:30 p.m. at Lane Agri-Park. President J. Smith called the meeting to order and minutes from the February meeting were approved as presented in the newsletter.

**TREASURER'S REPORT:** Current balance \$3,889.13.

### PROJECTS COMMITTEE REPORT:

**Speaker's Bureau:** A signup sheet was passed around listing topics and presenters who taught the Basic Class. Volunteers were asked to sign up to present and write an article on a topic.

**Special Events:** *April 7-9—Bloom 'n Garden Expo — Franklin. June 8-11—Southeastern Master Gardeners' Conference—Chattanooga. Date to be determined: Field-trip to The Oasis Butterfly House.*

**Conference Silent Auction** — K. Miller talked about the need for volunteers to help coordinate the items brought in for the Silent Auction. Plant items need to be native to TN for optimum growth. B. Jones volunteered to help with this.

**Newsletter:** J. Smith asked members to submit articles for the newsletter. He challenged everyone to write one article this year.

**Garden Basics Class:** Forty six attended the class. It was determined that 30 minutes was too short for the sessions. Thanks to volunteers who helped with setup, refreshments, assembling materials, etc. 15,000 pages of printed materials were used. Recognition was given to J. & K. Smith for their hard work.

The President appointed a committee to review and update the **Constitution & By-laws** which need to be brought up to the State minimum. Appointed were: D. Richardson, K. Gibson, J. Dickson, K. Miller, J. Smith.

A. Tuggle spoke about the **Diagnostic Clinic** and lab. Two microscopes, a computer, and reference materials are available for use. Digital images of insects and pests can be sent to A. Tuggle who will, in turn, send them to Nashville for diagnoses. A. Tuggle would like to offer the diagnostic clinic once or twice a month on Saturdays, perhaps at the public library.

The members were asked to think about the following items for the next meeting: **Design a new T-shirt** for members to wear at SE Conference, **Fall Extravaganza**, and **Fall Garden Basics** class.

Meeting adjourned at 8:00 p.m.

## LANDSCAPE DESIGN - The Typical Home Site

### Second In A Series

By: J. Smith, President

Landscape design over the past 30 to 60 years unfortunately has been influenced by the Federal Government and its FHA program. This program required 12 shrubs and a tree. Today you can walk or drive down streets across the U.S. and observe the 12 shrubs and a tree still in many yards.

The government, in its desire to provide housing to middle class citizenry, has contributed to not only "cookie cutter" homes but "cookie cutter" landscapes. This resulted in landscape design characteristics that, if you were to remove all improvements, such as houses, garages, carports, patios, decks, etc., the remaining would not be distinguishable one from another — curb cuts with straight short driveways, a 3 ft. wide concrete walk to the front door, similar foundation footprints, a 12 ft. x 12 ft. patio, etc.



screening the front door to prevent people from seeing who may be entering the home. This process has, however, created security problems, as has the misplacing of tall growing shrubs under windows. Shrubs under windows, allowed to grow, can create not only security problems but also due to limited air circulation can cause mold and mildew problems in addition to lighting problems in the interior of the home.

Due to the lack of imagination of the middle class home builder and the influence of the Federal Government in its home loan guarantee programs, we have been saddled with unimaginative home landscaping. With a little time and effort, this dull design process can be overcome.

Builders sometimes tried to alter the appearances by using vertical shrubs at corners, or around doorways, or by

## 2006 EVENT & MEETING CALENDARS

### EVENT CALENDAR FOR 2006

Perennial Plant Society of Middle Tennessee Plant Sale Sports Arena at Tennessee State Fairgrounds	April 1, 2006	9:00 a.m. — 2:00 p.m.
Bloom 'n' Garden Expo Williamson County Ag Expo Park — Franklin, TN	April 7-9 For information visit: <a href="http://www.wcmga.net">www.wcmga.net</a>	
Hydrangeas For American Gardens — Dr. Michael Dirr Memphis Botanical Gardens — Memphis, TN	April 10 Contact Memphis Botanical Gardens for information	
GroWild, Inc. Native Plant Nursery Open House Fairview, TN	May 5-6 For information call Terri Barnes	8:00 a.m. — 5:00 p.m. 615-799-1910
Mid-State Iris Society Show Suntrust Bank Bldg. — Murfreesboro, TN	May 7	1:30 p.m. — 5:00 p.m.
Middle Tennessee Daylily Society 2006 Sales Spring Sale — The Mall at Green Hills Show/Sale — Cheekwood Botanical Gardens Fall Sale — Bellevue Ace Hardware	May 6 June 24 September 9	10:00 a.m. — 4:00 p.m. 10:00 a.m. — 4:00 p.m. 10:00 a.m. — 4:00 p.m.
Secret Garden Tour Murfreesboro, TN	June 9-11 Tickets may be purchased at The Discovery Center	
Southern Region Master Gardener Conference Chattanooga, TN	June 8-10 For more information visit: <a href="http://www.srmgc.Tennessee.edu">www.srmgc.Tennessee.edu</a>	
Mid-State Iris Society Rhizome Sale Cannonsburgh Village—Murfreesboro, TN	June 24	9:00 a.m. — 12:00 N

### MEETING CALENDAR FOR 2006

MONTH	DAY	PROGRAM	REFRESHMENTS
January	23	Agent Tuggle—Projects	Fladung, Hollingsworth, K.Smith
February	20	M.Vehr—Colorburst Nursery	Miller, Gibson, Dill
March	20	Agent Tuggle—Diagnostics Labs	Gutherz, Jones, Hines
April	17	C.Owen—Blooms Nursery <b>NOTE: plant swap cancelled</b>	<b>POT LUCK</b>
May	15	B. Smith—Landscape Architecture	McCrary, Fedorowicz, Arnold
June	19	P. Rowelette—Valley Growers	W.Richardson, Ellis, Norfleet
July	17	C. Holloway—M'boro City Horticulturalist	Selby, Massquoi
August	21	TBA	<b>POT LUCK</b>
September	18	TBA	W.Richardson, Gutherz, Fladung
October	16	TBA	Ellis, Fedorowicz
November	18	M.Nevills—Edu. Dir. Oaklands Mansion	Arnold, Dickson, P.Richardson
December	19	TBA	<b>POT LUCK</b>

## Featured Photo of the Month

Each month we will feature a photo submitted by members. The photo should be in **jpeg** format, and submitted by email to the newsletter editor no later than the third Friday of each month in order to be included in the newsletter to be published the fourth week of each month.

The subject should be related to your garden, your unusual or specimen house or garden plant, your landscape, water garden, etc. Please include your name and a brief description of each photograph submitted. I am looking forward to publishing your submissions.

**ORCHIDS** have been called the aristocrats of flowers. The *Cattleya* Orchid Group is "the" orchid to the popular mind — the prom or corsage orchid. This particular *Cattleya* (Jeweler's Act "Tiara") is an unifoliate type having fat pseudobulbs and leathery leaves. *Cattleyas* are sun lovers and do well indoors in a west or south window. During the 1950s and 1960s, the only orchids available were the blooms to be used in corsages for *very special occasions*.



CATTELEYA: A8531—SLC: Jeweler's Act "Tiara" (LC.Drumbeat x SC.Doris)  
Plant purchased from Elmore Orchids Knoxville, TN. When purchased, the plant had only one stem with one flower in bloom and one stem with buds. This is the bud stem now in bloom with 4 large, fragrant blooms. From K. Smith's home collection of orchids.

Orchid plants are now widely available. Try them... they are challenging but rewarding with their beauty and long-lasting blooms.

Submitted by: K. Smith

Ref: [Understanding Orchids 1998](#), Sunset Books, Menlow Park CA

Be sure to attend the April meeting to receive your Master Gardeners of Rutherford County Membership Directory!

### MASTER GARDENERS OF RUTHERFORD COUNTY

Lane Agri-Park  
315 John R. Rice Blvd.  
Murfreesboro, TN 37129  
Phone: 615-898-7710

Newsletter Editor:  
Email: [ksmith555@bellsouth.net](mailto:ksmith555@bellsouth.net)



Programs in agriculture and natural resources, 4-H youth development, family and consumer sciences and resource development. University of Tennessee Institute of Agriculture, U.S. Department of Agriculture, county governments cooperating, UT Extension, and Tennessee State University provide equal opportunities in programs and employment.

"**The SCOOP**" is the monthly newsletter of the Master Gardeners of Rutherford County, Tennessee and is published the fourth week of each month by email. Those members without email and who are not able to attend meetings may receive the newsletter by U.S. postal mail. The deadline for articles, pictures, events, etc. to be included in the newsletter is the third Friday of each month.

Meetings are held on the third Monday of each month at the Lane Agri-Park at 6:30 p.m., unless specified. Membership is \$25 for a single, or \$35 for a couple residing at the same address. All memberships are valid January through December and are prorated.

Memberships in the Master Gardeners of Rutherford County are open to those interested in learning, teaching, and volunteering for the purpose of educating the community in all phases of gardening.

PLEASE NOTE: MASTER GARDENER CERTIFICATION REQUIRES 40 HOURS OF TRAINING PLUS 40 HOURS OF VOLUNTEER SERVICE. RECERTIFICATION REQUIREMENTS ARE 25 VOLUNTEER HOURS, PLUS 8 HOURS OF CONTINUING EDUCATION PER YEAR. ATTENDANCE AT MEETINGS COUNTS AS 1.5 HOURS FOR CONTINUING EDUCATION AND 1.5 HOURS FOR ADMINISTRATION.